

Data Sheet 138

Pre Cleaner Type DELTA 138



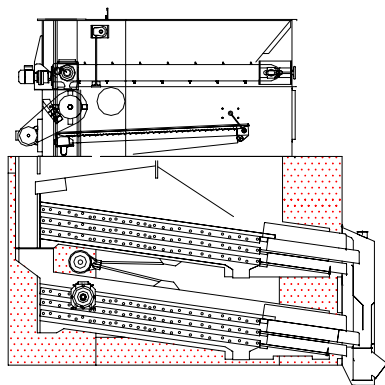
The Cimbria's grass seed pre-cleaner type DELTA 138 is specially designed for pre-cleaning of grass seeds and similar types of seeds, which are often received with a relatively large content of waste products and are therefore difficult to clean by means of the traditional cleaning machines.

To meet special cleaning requirements type DELTA 138 is available in two different designs 138.2 and 138.3. Each of these types provides a screen area of 18 m² arranged in 6 screen rows each with 3 single screens. The base and frame of the machines is in heavy gauge pressed steel profiles having all rotating parts well protected inside the steel frame. The screen shoe is manufactured from insect- and moisture resistant marine plywood. With food proof, Swedotec TPS surfaces film.

The inlet mounting on types 138.2 and 138.3 is provided with belt conveyors and shutters to ensure a smooth flow in the total working width of the screens. The belt conveyor is provided with vulcanized feed ribs and mounted over two rollers with drive and tension ends and is driven by an independent 0.37 kW variable speed geared motor. The shutter is of the rack-and-pinion type controlling thickness of the layer on the conveyor may be adjusted accurately and adapted to a variety of seeds and seed qualities. The adjustment takes place via a worm regulator with hand wheel.

Spike Thresher (138.3)

The spike thresher receives the unfinished product directly from the belt conveyor and processes it by the rotations of the spike thresher rotor through the material to produce a product which is acceptable for processing by means of the shaker and the screen. The rotor and the shaker are driven by an independent 3 kW motor.



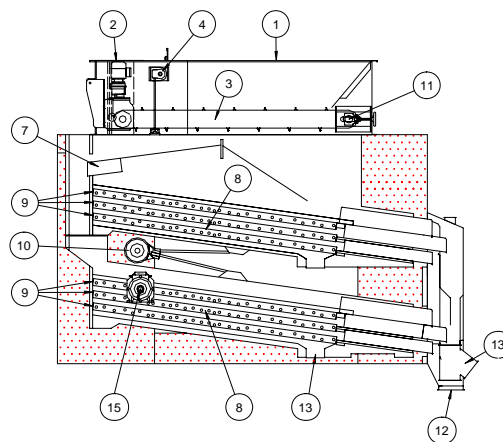
Shaker (type 138.3 only)

The purpose of the shaker is to separate seed from straw. A projectile movement is generated over an eccentric system causing the unfinished product to move upwards on the inclined concave, whereby seed and straw are separated. Seeds and other particles fall through the holes in the shaker and to the feed guides to the upper screen. Straw and other relatively long parts, "flow" all the way to the shaker concave where they fall down on the rear part of the upper screen and are discharged.

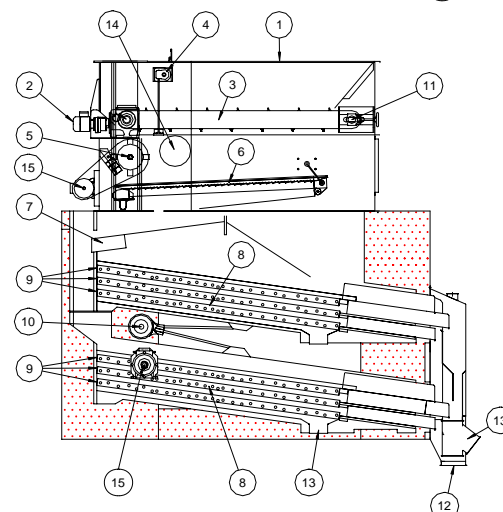
Screens

Both models of the DELTA138 provide a screen area of 18 m² arranged in 2 screen boxes with a total of 6 screen rows. The two upper screens are normally used for the separation of particles larger than the required cleaned seed. The third row is used as chaff sifting sieve. The screen frames are made in standard size and may therefore be used in all types of Delta screen cleaning machines. All screens may be cleaned by means of special rubber balls.

The ball boxes are designed so that it is not necessary to take out the boxes when changing the screens.



138.2



138.3

- | | |
|---------------------------|--|
| 1. Inlet hopper | 9. Screen shoes |
| 2. Variable geared motor | 10. Eccentric |
| 3. Band conveyor | 11. Tension section for feed belt |
| 4. Feed shutter | 12. Outlet finish product |
| 5. Spike thresher (138.3) | 13. Waste product |
| 6. Straw shaker (138.3) | 14. Connection for extern dust suction |
| 7. Product divider | 15. Motors |
| 8. Screen sections | |

Technical data	138.2	138.3
Capacity Grass Seed	10.0 t/h	10.0 t/h
Dimensions		
Length	3967 mm	3967 mm
Width	2000 mm	2000 mm
Height	2975 mm	3725 mm
Screen area	18 m ²	18 m ²
Motors		
Band conveyor	0.37 kW	0.37 kW
Spike thresher and shaker		3.0 kW
Screen	3.0 kW	3.0 kW
Weight	2575 kg	3015 kg
Dynamic loading at 4.6 - 4.8 Hz:		
P _H = +/- 1850 N P _V = +/- 2750 N 10N = 1 kg		

Copyright © - The right to alterations is reserved